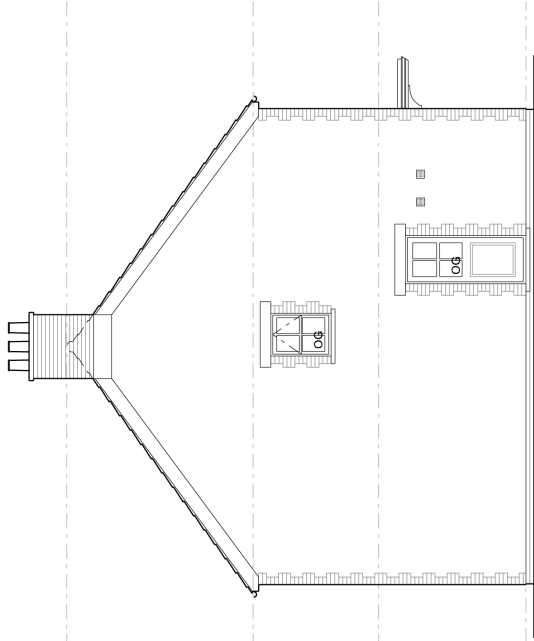
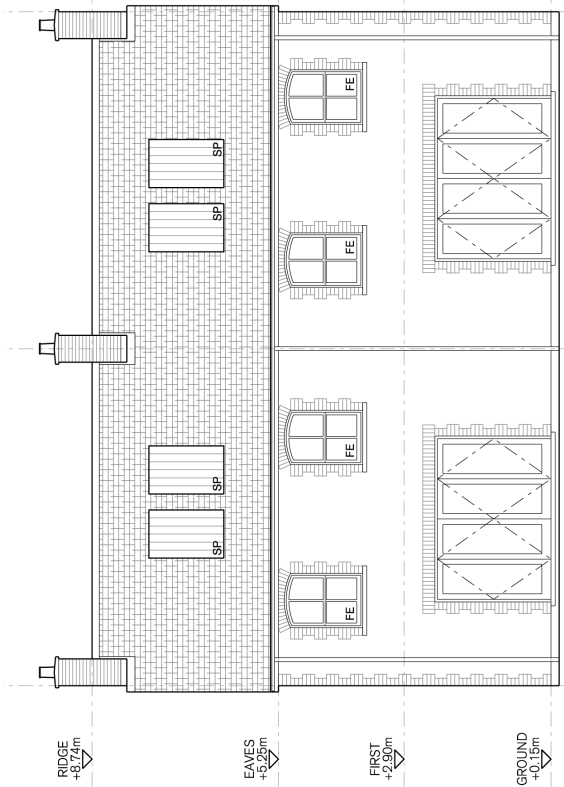


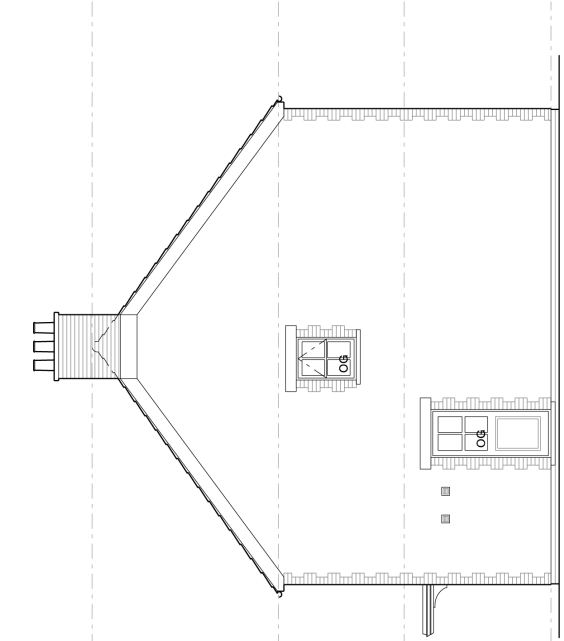
**01 FRONT ELEVATION [NORTH EAST]**  
THREE BED SEMI-DETACHED | SCALE:- 1:100



**02 SIDE ELEVATION [SOUTH EAST]**  
THREE BED TERRACE | SCALE:- 1:100



**03 REAR ELEVATION [SOUTH WEST]**  
THREE BED TERRACE | SCALE:- 1:100

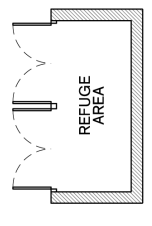


**04 SIDE ELEVATION [NORTH WEST]**  
THREE BED TERRACE | SCALE:- 1:100

- WALLS**  
Painted sand cement render  
Brick plinth below DPC  
Brick quoins
- CILLS/HEADS - FRONT**  
Cill - Rec-con stone  
Head - Brick arch/brick quoins
- ENTRANCE CANOPY**  
Painted timber canopy with lead roof
- ROOF**  
Slate tiles with lead flashing to chimney
- CHIMNEY**  
Brick with wet construction  
Clay chimney pots
- VERGE**  
Painted timber fascia
- RIDGE**  
Clay ridge tile with wet construction
- FASCIA/SOFFT**  
Painted timber
- WINDOWS**  
Double glazed white UPVc recessed min. 100mm front facade face.
- EXTERNAL DOORS**  
Front - Painted hardwood with double glazed panels  
Rear - Double glazed white UPVc sliding folding doors
- RAINWATER GOODS**  
Black UPVc with 1/2 round gutters

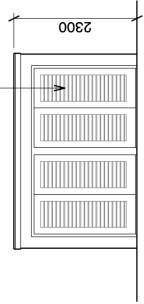
**3 BED SEMI-DETACHED**

- KEY**
- FE - Fire escape window
  - OG - Obscure glass
  - SP - Solar panel

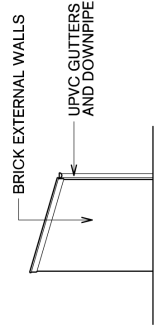


**05 REFUGE STORE PLAN**  
THREE BED SEMI-DETACHED | SCALE:- 1:100

TIMBER LOUVER DOORS

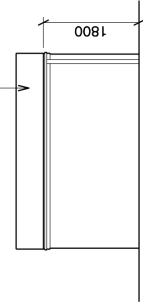


**05 REFUGE STORE FRONT**  
THREE BED SEMI-DETACHED | SCALE:- 1:100



**05 REFUGE STORE SIDES**  
THREE BED SEMI-DETACHED | SCALE:- 1:100

BITUMIN FELT ROOF



**05 REFUGE STORE REAR**  
THREE BED SEMI-DETACHED | SCALE:- 1:100